

VILLAGE NEWSLETTER

Volume No 155

May 2011



entertainment™

The Entertainment books for 2011/12 are now available! if you would like to purchase one please email shane@mangerebridge.co.nz or call 021 815 184

Slight Apology

As you probably noticed last month we printed the newsletter from April 2010, this was an accident and we printed the correct April newsletter a week later and it was sent out, we are sorry for any inconvenience caused

Waterlea Primary School

Another full on term at Waterlea School. It was great to see our parents at our Student Led Conferences where children talked about their learning successes and next steps.

At the recent Interschool Cricket we came home with the winning trophy. All classes have been studying "sustainability". The Middle School's study took them down to the Water Front to investigate how a storm water drain works. In the photo you can see our good friends Peter Brown and Gay Watson from 'Future-in-tech helping the children track the passage of storm water.



Next term as well as improving our literacy and maths the Year 1-3 put on their school musical and the Years 4 – 6 will be participating in swimming lessons and winter interschool sports.

Sadly we farewelled our popular caretaker Daryl Kirman who is starting his own roofing business.

Mangere Mountain Education Centre - Trade Table

Do you have a surplus of Food to trade for other food?

Bring your items to our...

Food Trade Table

Time: 10AM TO 11AM

Date: The second Friday of every month

Venue: 100 Coronation Road, Mangere Bridge

Phone: 09 634 7305

What's on in the Bridge

- Monday:** Guides 6 - 8pm.
CMA Day Care 9:30am - 12:30pm.
Methodist Church Hall.
St John Youth- every Mon 6:30 - 8:00pm.
Tai Chi All ages, \$6 for students - 7pm
St James' Church Hall - Phone 266 7473.
- Tuesday:** Pippins 4:30 - 5:30pm
Keas 4 - 5pm
Cubs 4 - 5:30pm
- Wednesday:** Brownies 6 - 7:30pm
Tibetan Buddhist Class 7:30pm
Plunket Toy Library 9:30am - 10:30am
Yoga 6.30 - 8 pm Mangere Mountain Education Centre.
Mangere Bridge Plunket Indoor Bowls Names by 7.20pm Mangere Memorial Hall.
Exercise Classes with DYNABANDS Manukau Yacht Club 6.30pm - 7.30pm.
Plunket car seat rentals 9:30 am- 12:30pm
Plunket Rooms, 5 Taylor Road
- Thursday:** Bridge Art Group, 9am - Noon, Memorial Hall
Scouts 6:30 - 8:30pm.
- Friday:** Sing-a-long storytime 10:30am Library.
- Saturday:** Plunket Toy Library 9:30 - 10:30am
- Mon/Tue/Thur** - Plunket Playgroup 9am - 11:30am
- Mon/Wed:** Senior Citizens Housie, 1pm Bridge Crt Hall
- 2nd Sun's:** Sunday Walking
- Tue - Thur:** Mangere Bridge Walking group 9:00am
- Mon, Tues, Wed, Fri** Mangere Bridge Playcentre 9.15am-12.15pm, Domain Road
- 3rd Wed:** R & R Meeting 7.30pm St James Church Hall
- 1st Thu:** Senior Citizens Travel Clue, Day Trips phone 634 1062.
- 1st & 3rd Sat:** Village Square Market.
- Contact Details for Scouts - 0800 Scouts

Opening Hours

Monday - Wednesday 9am to 5:30pm
Thursday - Friday 9am to 6:00pm
Saturday 9am to 1:00pm

Phone: 09 636 4249

Ph/Fax: 09 636 6228

We are in the middle of the village shops
Parking in front and behind the Pharmacy

Mangere Bridge Pharmacy
25 Coronation Road
Mangere Bridge

**Helping the "Bridge" community
for over 50 years!**

Pop in and see Justin, Molly, Joanna or Sue at
YOUR local friendly, family pharmacy.

Services

Prescriptions
Medication Compliance Reviews
Medication Unit Packaging
Vitamins
First Aid
L'Oreal Haircare and Skincare
Cosmetics
Gifts

Village Happenings

with Carol-Anne

The Summer Entertainment Series has now come to end for another year. This event included the Autumn Festival, for which there is a report elsewhere in this publication, St Patrick's Day Celebration and 'Thursday Night Live'.

The live bands finished their season on 28 April. I hope you have enjoyed the good variety of free entertainment on Thursday nights. I like to promote local talent so please let me know of any bands that you would like me to hear with a view to including them in the future. Anyone interested should contact me to arrange an audition gig.

The Four Winds and Lion Foundations have been great supporters of our events and the Business Association would like to thank them for their financial support which this year also included a grant for Stage 8 of our CCTV Surveillance System and another partial grant towards Stage 9 needed to complete the system throughout the village. There have been some very good results from the footage of incidents.

In conjunction with Ambury Regional Park, the Mangere Mountain Education Centre and Te Pua Marae the business association has produced a tourist brochure. This has recently been distributed to; hotels, motels, car and campervan hire companies between Mangere Bridge and the airport. We are already seeing an increase in tourists visiting the Village and Ambury Park has reported more campervans using their camping facilities.

Did you know that having a restaurant in the area could increase house values? It is one of the things that our Business Improvement District has lacked here in Mangere Bridge. However, I am pleased to advise that this may be remedied soon so look out for some changes that are underway.

Due to budget constraints in the current financial year my hours will be reduced till the end of June however, I hope to be available for appointments on Tuesday and Thursday afternoons. Please first phone 636 7491 or contact me via the business association's website: www.mangere-bridge.co.nz. The issue of additional funding to enable the Business Association to continue to employ a manager after 1 July is still unresolved.

kind regards *Carol-Anne Armitage*
Village Manager
Mangere Bridge Progressive Business Association

Accountant

Kensyl Holdings Ltd - Ken Taylor B.Com.

- Over 30 years experience in accounting, sales and marketing
- Accounting to suit all your needs
- Monthly and/or annual accounting and taxation work
- Long or short term assignments
- Prompt and efficient service

We can work from your office or ours
Located in Mangere Bridge

Confidentiality assured, competitive rates.

Contact Ken Taylor

Phone: 622 2982, Fax: 622 2987
Mobile 027 761 223

email: kensylholdings@xtra.co.nz

Silver Sneakers

Gentle Exercise, For Goodness' Sake

Take control - exercise your body, focus your mind, support better health, and gladden the heart.

Join Kimi and friends for a fun hour of strengthening, stretching and fitness movements, set to toe-tapping music.

Kimi brings many years' teaching experience and enthusiasm to every class.

Qualified Group Fitness Instructor and First Aider.

Silver Sneakers Group Fitness

Tues & Thurs 9:30 - 10:30am

Senior Citizens' Hall

3 Pearce St, Onehunga

Phone Kimi 630-0629 or email kimi.w.nz@xtra.co.nz for more info

Mangere Bridge Junior Badminton Club

Mangere Bridge Junior Badminton Club has got the 2011 year off to a great start with 12 new members joining our junior (7-11 years) timeslot at 4.30 on a Thursday evening. We now have a membership of over 20 children in this section.

At 5.30pm, the seniors (12 years and over) take over for their hour of coaching and games. Our professional coach is an ex-national squad player.

Our interclub team begins their season next term. From mid-April to September, these players will compete against other Auckland clubs at the regular Friday night competition.

We are happy to hear from anyone who would like their child to join the badminton club and we run a waiting list as required. There is currently no waiting list for the senior timeslot of 5.30-6.30pm Thursday evening.

Please contact Caroline on 622 0453 or 021 919 826 for more information.

Mangere Bridge School – Term 1 Celebrations

Our amazing swimming team won the zone swimming championship once again. Congratulations to Ms Morgan and Mrs Purcell who coached the team and to our classroom teachers who teach our children to swim. We have won the Swimming Cup every year for 11 years and in the past 16 years we have only lost it once. Also well done to the Softball team who came second equal at the zone championships.

Lots of learning has happened in classrooms with reading, writing and maths. Our concept for the integrated curriculum this term was COMMUNITY. We held a Red & Black fundraising day for Christchurch schools and with the help of our sister school in Melbourne, Chandler Park, Small Kauri and the PTA we raised \$3,700 for the children of Christchurch. Our fundraising and concern for the children of Christchurch is showing our children the real meaning of community.

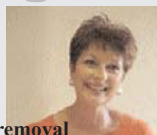
We also held a great Community Day where the children shared their learning about community with their families.

A school speed zone now operates at Mangere Bridge School at the beginning and end of each school day. Electronic signs have been installed on Taylor Road and will soon be installed on Coronation Road. The 40 km/h zone can also operate at other times when there are more than 50 children crossing roads outside our school.

SUE'S FOR

Beauty

Introducing new Pharo Salon
Sugaring System, a natural
alternative to waxing:



- 1) Faster more effective hair removal
- 2) This system is excellent for sensitive skin
- 3) Less Discomfort with redness minimised
- 4) Any residue washes off easily with water

Having smooth skin in time for summer,
shouldn't be painful!

SUE TYLER

Tel: 634 2980, Mob: 021 286 4466,
19 Andes Ave Mangere Bridge

LOOK!!! LOOK!!!

A+CUTS

- ✓ Free Quotes
- ✓ Competitive Price
- ✓ Excellent Work

- Hedges
- Gardening
- Tree trimming
- Section Clean ups
- Onehunga Weed Spraying
- House and Spouting Cleaning

Ph Chris Lockett

636 4929 or Mobile 021 259 5516
66 Kiwi Esplanade, Mangere Bridge

Advertising plays a huge part in this newsletter and without the Business's advertising in the newsletter we wouldn't be able to keep it going, if there is any business that would like to go on the waiting list to advertise in the Mangere Bridge Newsletter or would like to advertise on the Mangere Bridge website please get in touch with me at shane@mangerebridge.co.nz

Onehunga Community Centre

83 Church Str Onehunga (by the library) Ph 6349253
For all our classes check out our website www.onehungacentre.org.nz

MONDAYS - ACTIVE MUSIC & MOVEMENT

GOLD COIN

Class 1: Jam'in with Jane 9.30am - 10.10am

Fun structured learning thru Rhyme, Rythum and song. Parent and child participate and interate using music, instruments and action. 40 minute class followed by a hot drink, biscuits and chat.

Play and Chat 10.10am - 10.30am

Time for children to enjoy and play together assisting in social development. Parents can meet friends and share experiences over a hot drink and biscuits.

Class 2: Looney Tunes 10.30am - 11.10am

Wiggle, dance, clap, sing. This class is less structured than class 1 earlier. Come along at 10.10am for play and chat then sing, dance and have fabulous fun with your children.

THE ART OF MAORI WEAVING 11.30am - 1.30pm

FREE

Join Shelley, an experienced flax weaving teacher to learn this wonderful culture art form.

WAIATA 1.30pm - 2.40pm

FREE

Learn Maori thru song. This is a group of mixed ethnicity New Zealanders who love to sing. Joesph, our tutor, introduces basic Te Reo then sing or simply listen to the beautiful songs. Children are welcome. See picture opposite.

TUESDAYS - BOXFX 12.00pm-1.00pm

\$5 (also on Fridays)

Get fit fast with a dynamic boxing exercise technique. Kids' play area available.

JEWELLERY MAKING 12.30pm - 2.30pm

\$5

Hands on class learning to make jewellery with materials that are recycled or cheap. Great for you or for gifts.

WEDNESDAYS - CHI BALL 10am-11.30am

\$5 (also on Mondays)

Mind-Body exercise and wellness programme that promotes balance, well-being, harmony. Our instructor is a qualified registered professional.

THURSDAYS - KNITWIZZ 1pm-3pm

GOLD COIN

Knitting, crochet, embroidery. Come along, learn or show off your hand craft. Join a great group of all ages

Y-BOXFIT 4pm-5pm

FREE

High energy fun & fitness suitable for both boys & girls from 11 - 15yrs. Qualified YMCA instructor.

FRIDAYS - PICASSO KIDZ 10.00am - 11.00am

\$6.50

Art is such a fun and creative way for 2-5yrs to develop their fine motor skills. This class requires parent interaction, is structured with flexible elements to adapt for different levels.


ONEHUNGA SCENE ACTIVITIES 12.30pm-2.30pm

GOLD COIN

Onehunga SCENE invites you & your friends to join us for a social afternoon of Indoor Bowls, scrabble, cards, books and magazines. All equipment provided as well as light refreshments. Retired or semi retired 55+ social group.



TROUP FUNERAL HOME



Caring Funeral Professionals

110 Kolmar Rd,
(cnr Weston Ave)
Papatoetoe
Ph: 277 2526

Troup Funeral Home - is situated on the corner of Kolmar Rd and Weston Ave in Papatoetoe but they are available to serve all areas of Auckland.

Dianne Troup is a qualified Funeral Director with many years experience and she is joined by Karlene who is also a Funeral Director and for many years worked with grieving families at Middlemore Hospital.

The death of someone we love affects us in many different ways. Dianne and Karlene care for the deceased, and their families in a way that recognises the uniqueness of the grieving experience. Using their natural compassion they will calmly, honestly and clearly guide you through the many decisions involved in arranging a funeral.

They are available to discuss any questions you may have at any time and welcome the opportunity to reassure and inform you.

Troup Funeral Home has been accepted as a member of the Funeral Directors Association of New Zealand and adhere to FDANZ code of ethics.



AUCKLAND PROFESSIONAL PAINTERS LTD

Based in Mangere Bridge,
Interiors, Exteriors, Residential &
Commercial Painting
Ring Mitch 027 652 8069
(09) 636 3613
appltd@xtra.co.nz
Specialists in suspended ceiling
re-painting.



Photo at the Mangere Bridge Autumn Festival

Stepping Stones To Optimum Health

STONE CHIROPRACTIC

Dr Trevor A.H. Stone, D.C.
Over 20 years experience



1 Waterfront Road
Mangere Bridge
Auckland
New Zealand
Phone (09) 622 1540

BRIAN'S LAWNMOWING

Mangere Bridge



Regular Reliable Service
Phone Brian or Carol on 636 4391
or leave a message



NOW OPEN

at
359 Onehunga Mall
Phone: 634 6260
Open 7 days 9am - 7pm

SCENE in Onehunga

Senior Citizens Events and Expeditions (Scene) is Onehunga's newest club for those aged 55+, and the group is off to an encouraging start. At April's monthly meeting a speaker from Disability Resources explained and exhibited a range of equipment to ease every day living. From walking aids to jar openers, there are a number of gadgets that make tasks that once were taken for granted achievable again. The meeting was then entertained by the Knox Scottish dancers, who presented a traditional dance and then explained the meanings of some of the fine tartans they wore. Afternoon tea was enjoyed by all, and old and new members had a chance to meet and mingle.

The monthly meetings are held at the Pearce Street Hall, on the first Tuesday of every month from 1pm to 2.30pm. May 3rd will see Patricia Troop give an informative and humorous talk on body language, while the June 7th meeting is dedicated to Jim Joll who will entertain with jokes, songs and stories. If you want to find out more, either come along to one of the meetings or contact Shirley on 524 2908, Shirley.michael@xtra.co.nz, or call in to the Onehunga Community Centre.

Every Friday afternoon Scene coordinator Shirley Rutley oversees an Activities club where indoor bowls, Scrabble, cards, books and magazines are enjoyed in a sociable atmosphere. All are welcome, come along to the Pearce Street Hall, 3 Pearce Street, Onehunga between 1pm and 2.30 to join in the fun.

Scene programmes are free, but if you can manage a gold coin donation this is appreciated. Feedback is welcomed, as are ideas for new speakers or donations of goods for raffle prizes.

Mangere Historical Society

An evergrowing number of people are meeting on the third Tuesday of the month at St James Hall to meet up with other like minded folk and listen to many different subjects from our interesting speakers. The April meeting had one of the newer members who had grown up in South Africa sharing some of the history that he had learnt at school. The Dutch farmers (Boers) had moved up from South Africa and settled on land in the North West of what was to become Natal. The British settlers had settled in Durban and slowly these people spread out taking over more land, that belonged to the many native tribes who lived on these areas. The Zulus were very annoyed and their Chief Charka slowly united a very large army of these natives, armed only with short throwing spears and body covering shields which they used for hunting game. The army of 10,000-15,000 natives attacked settlers in 1828 and 470 people were killed. Natal became a British Colony so they would have assistance from the British Army to defend them. Lt Col. Lord Fredrick Chelmsford who had been ADC to Queen Victoria, was selected to lead the British Army of 1680 troops sent from U.K. He had not been on active service for some time. Pietermaritzburg was the Capital of Natal. Lt Col Chelmsford took his army out to fight the Native Army but was unable to find them, although 200,000 were in hiding within a few miles of the British Army. These troops had to fight against and were outnumbered by large numbers although the front line of the attacking natives fell to musket fire, they eventually overcame the troops and only 55 survived from the British Army. They retreated to Rourke's Drift, taking their injured with them. Here they were again routed when the thatch roofs of their huts were set on fire. Many mistakes were made by the leadership of the British Army but they were covered over and on the return of the soldiers, Queen Victoria awarded 11 Victoria Crosses. This was the most ever given for gallantry in one action. It was 230 years later before the Zulus were to be recognised in their own right, when the new President of South Africa was Jacob Zuma, a Zulu gentleman.



**REGISTERED
MASTER
ELECTRICIANS**

All Installations, Repairs,
Rewiring
Free Installation Quotes
PH 636 5031

CAR PROBLEMS?

- Prompt Service
- Reasonable rates

Kevin Smith

Smith's Auto Services,
7 Claresholm Pl, Mangere Bridge
for all mechanical servicing
or electrical solutions.

Give me a call on
634 2586
or **0274 990 651**

Important Contact Details:

Citizens Advice Bureau	275 6885
Mangere Bridge Post office	636 9645
Village Management Office	636 7491
Mangere Bridge Community Information Services	
Village Newsletter	021 815 184
Mangere Bridge Website	021 815 184
Articles	articles@mangerebridge.co.nz
Advertising	shane@mangerebridge.co.nz
Other	newsletter@mangerebridge.co.nz

Brierly

Plumbing and Gas Services Ltd

- Plumbing • Drainage • Gas Fitting
- Renovations • Local Friendly Service

Even the dreaded blocked toilet or
leaking roof is no problem
"Big enough to do anything, small
enough to care"

Phone 622 0446

Mobile 021 872 487

Muir Avenue, Mangere Bridge

REPAIRS

24hr Service

zips, hems, pockets etc.

Joan

Phone 636 9498

Miro Road

Mangere Bridge

Copy Deadline for June 2011

Deadline for the June Issue is the 24rd May 2011. To ensure that your article makes the June issue please email your articles to articles@mangerebridge.co.nz

We cannot guarantee a definite delivery time for the Village Newsletter, however we will do our best to have it delivered before the advertised upcoming events

Music Lessons Piano or Keyboard



Learn to play, read, write music
in a professional half hour
private music lesson
with an experienced music
teacher.

Available in Mangere Bridge.
Contact Belinda Wilson
Phone 634 1156